

Panel *i* Replacement Program

FANUC

GET YOUR INDUSTRIAL PC IIOT READY!

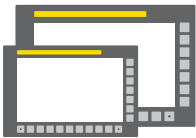
Don't leave your CNC system unsecured or unsupported, upgrade now with FANUC's Panel *i* Replacement Program.

WINDOWS 7 OPERATING SYSTEM IS NOW OBSOLETE.

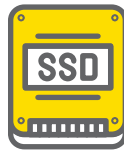
What does that mean? If your CNC is running on any other operating system other than Windows 10, you are not getting the most current security updates.

FANUC HAS A SOLUTION!

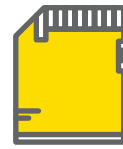
Our Panel *i* Replacement Program provides you with a powerful industrial PC available with touch or non-touch LCD display, solid-state drives and Windows 10 IoT Enterprise.



Available in Two Sizes
10.4" and 15"



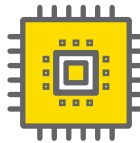
Solid-State Drives
For additional reliability and speed



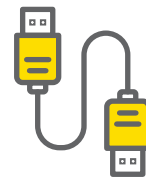
More Memory
Up to 8GB ECC RAM



Larger and Faster Storage
8, 16, 32, 64, 128GB SSD
or 500GB SATA HDD



Faster CPU
Core i5-4400E 2.7GHz or Celeron
2000E 2.2GHz CPU options



Port Options
1 Gigabit Ethernet port (10/100/1000)
standard; optional second port available

Advantages

SECURE INDUSTRIAL PCS UNLOCK IIOT ADVANTAGES

Upgrade now and securely connect all your CNC machines to your network! By connecting your equipment, you can run your machines while off the shop floor. Plus, you'll be able to get real-time production information critical for more effective data-driven decisions!

FANUC's Panel *i* Replacement Program upgrades your industrial PC to enable faster, more reliable and more secure operations!

Contact CNC Aftermarket for more information!



Connectivity



- More USB2.0/3.0 compliant ports
 - 1 front USB2.0
 - 2 rear USB2.0
 - 2 rear USB2.0
 - 2 PCI slot
- FA Full keyboard can be used with FANUC Panel *i*
- Standard MDI keyboards can be used with FANUC panel *i*
- HSSB connection